

ANNUAL REPORT

EMPOWERING MARGINALIZED COMMUNITIES
FOR INCLUSIVE AND SUSTAINABLE GROWTH



2023-2024

91+7896112782
www.blctfoundation.in



See for the highest, aim at that highest, and you shall reach the highest.

- Swami Vivekananda

TABLE OF CONTENT



1

NOTE FROM CEO DESK	5
BRIEF OF THE ORGANIZATION	6
OUR STRUCTURE	8
OUR REACH	9

2

PROJECTS

LIVELIHOOD MAPPING & PROMOTION OF MICRO ENTERPRISES (Women & SHGs)	13 - 15
SKILL DEVELOPMENT PROGRAM (COURSE OUTLINE & IMPACT) YOUTH	16 - 18
NURTURING GROWTH: EMPOWERING WOMEN FARMERS AND MUSHROOM FPO	19 - 20
REGENERATION OF TRADITIONAL INDUSTRIES: PROMOTION OF HANDLOOM AND HANDICRAFT CLUSTER	21 - 22

NONGTHAM HANDLOOM CLUSTER PRODUCER COMPANY LTD (NHCPCL) : HISTORY & REVIVE.....	23 - 25
--	---------

THRIVING THROUGH TRIBES: ECO-TOURISM FOR SUSTAINABLE LIVELIHOOD.....	26
--	----

3 OTHER ACTIVITIES

Awareness Programs and Activities Of MNTS (A unit of BLCCT).....	27- 29
---	--------

4 FINANCIAL AND AUDIT.....

30 - 32

BOARD MEMBERS FOREWARD

CEO's Message



Reflecting on our nine-year journey at Bethel Life Care Charitable Trust, I am filled with a sense of accomplishment and gratitude. What began as a mission to uplift the underprivileged through capacity building, education, and livelihood opportunities has flourished into a thriving foundation, making a genuine difference in countless lives.

Each year brings new challenges, but it also reaffirms the dedication of our team and our supporters. The needs in our mission area continue to grow, as do the barriers we face in meeting them. However, with every obstacle, we double our efforts, expanding our network and innovating in resource mobilization. I am inspired daily by the zeal of our team and the resilience of those we serve, whose smiles and words of gratitude are our greatest reward.

This annual report for the financial year 2023-2024 showcases the steps we have taken, the milestones achieved, and the transformative impact of our work. Looking ahead, we have exciting projects planned that we believe will strengthen our ability to address poverty, discrimination, and the disparities faced by so many in our society. With a united commitment, I am confident that Bethel Life Care Charitable Trust will continue to be a beacon of hope and change for those in need.

ABOUT

Bethel Life Care Charitable Trust

Bethel Life Care Charitable Trust (BLCCT) is a non-profit organization registered under the Trust Act, 1882 having registration number 2942 on 5th Sept 2014, with a vision to support strengthening of rural livelihoods amongst livelihood marginalized communities. In the initial years BLCCT works in Changlang district with unemployed youths helping them by imparting skill development training on I.T, Electronics, Apparel and Textile domains and started technical institution on Healthcare & Nursing for female candidates. Following year BLCCT expanded its base to work in disadvantages location of Namsai, Longding, Tirap and Anjaw district. BLCCT got an incubation fund to intervene in cluster of villages at Changlang in 2021 demonstrating livelihood mapping and livelihood generation on farm and non-farm sectors. Following emergence of COVID-19, BLCCT shifted its focus to emergency and pandemic consequences trained 220 health workers on Covid frontline worker (Basic Care Support) further they got engaged in primary and community health institutions. In recent times, BLCCT intervened to promote microenterprises, start-ups village entrepreneurs based on farm and non-farm sectors through capacity building, mentoring and handholding to SHGs formed under ArSRLM, Govt. of Arunachal Pradesh.



BLCCT strives for a developed, skilled and equitable society characterized by peace, unity and human dignity.

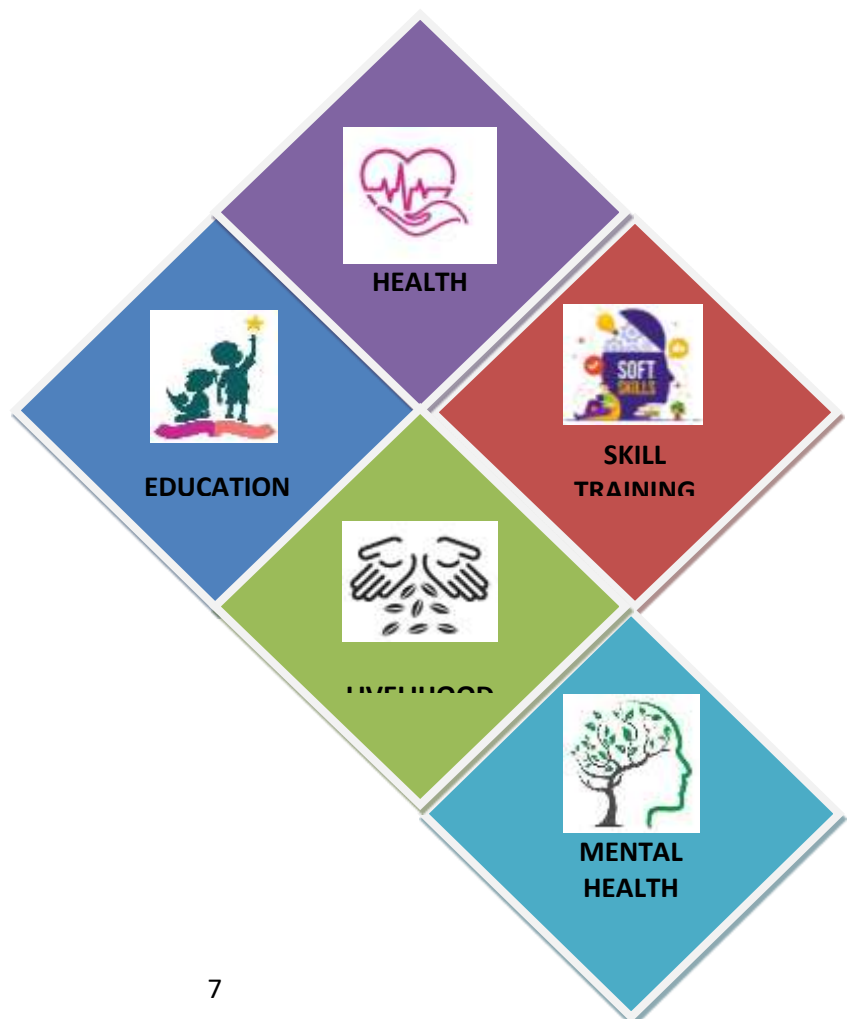


Empowering marginalized communities for inclusive and sustainable growth.

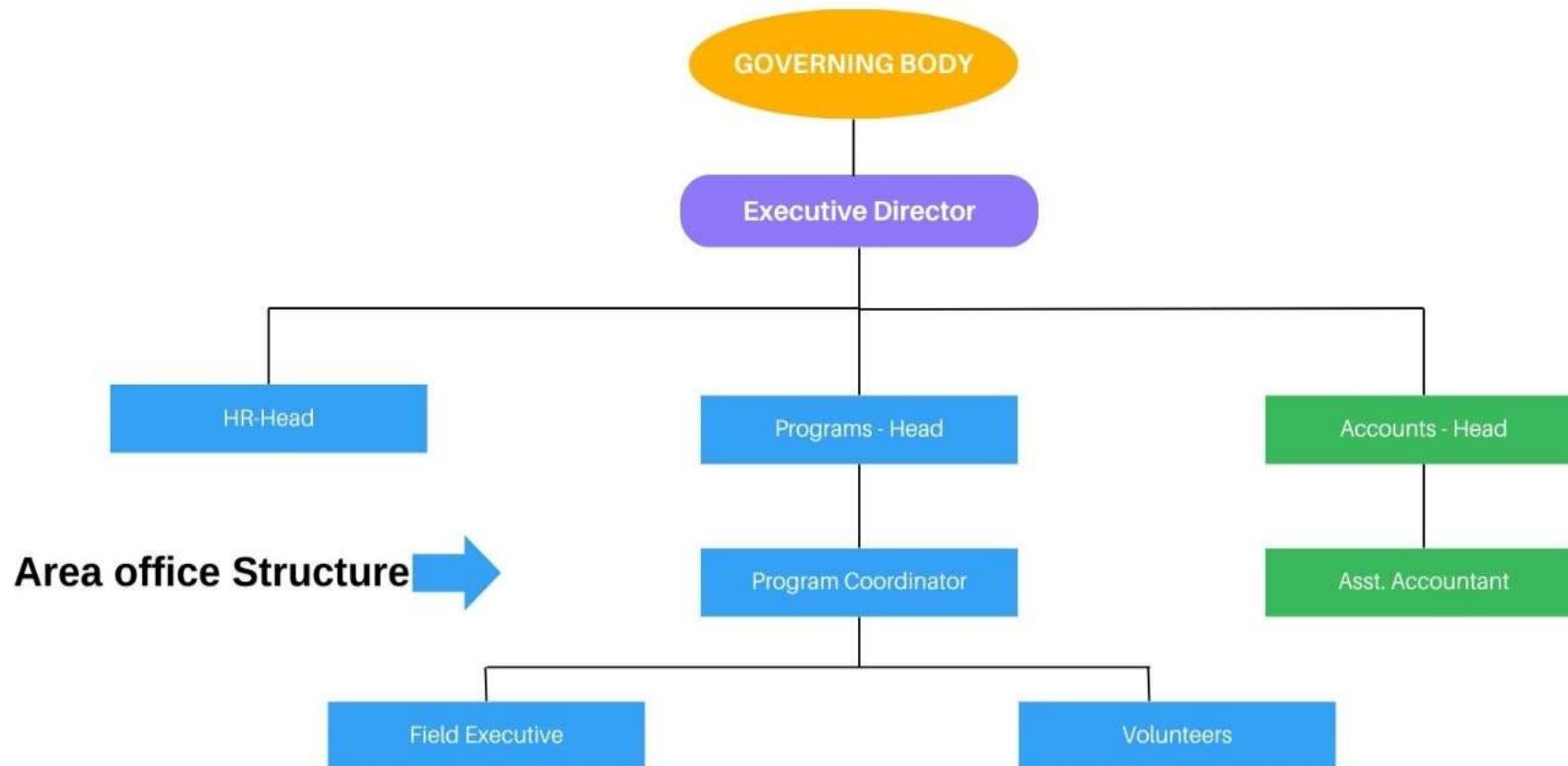
OBJECTIVES

1. To promote high quality, productive & creative education Institution, coaching centers, vocational centers and Skill development initiatives.
2. Empowering Smallholder's farmers through sustainable Agriculture Technology Solutions.
3. To bring education within the reach of every person even in the remotest part of Arunachal Pradesh or other region.
4. To improve the educational, socio-economic and livelihood status of people by organizing various types of educational and capacity building programmes.

THEMATIC AREA



ORGANISATION STRUCTURE



OUR OUTREACH

2

STATES

7

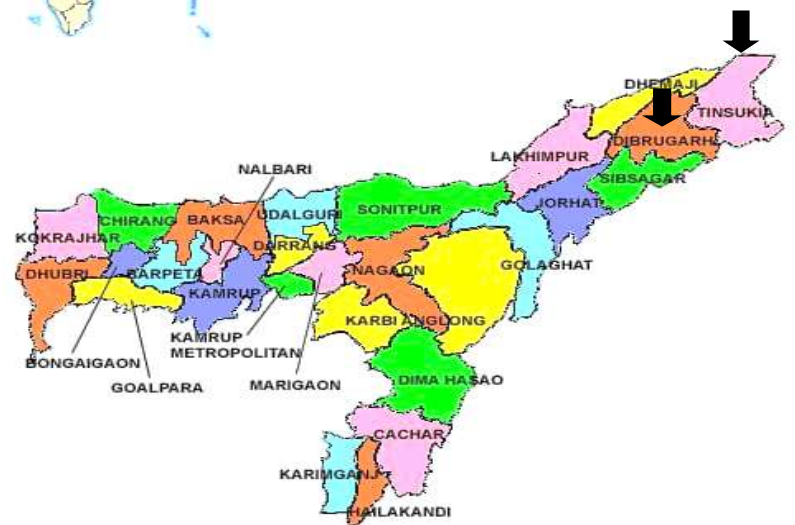
Districts

109

Villages

6957

Beneficiaries



List of Adopted Policies & Procedures

- ✓ **HR POLICY**
- ✓ **POSH POLICY**
- ✓ **PROCUREMENT POLICY**
- ✓ **FINANCIAL MANAGEMENT POLICY**
- ✓ **CODE OF CONDUCT**



LEGAL COMPLIANCES OF BLCCT

LEGAL STATUS



TAN



80G



12A



CSR Certificate



DARPAN ID



GST CERTIFICATE

PROJECTS

2

- ✚ **Livelihood Mapping & promotion of Micro Enterprise.**
- ✚ **Skill Development program (Course outline and impact).**
- ✚ **Nurturing Growth: Empowering women farmers and Mushroom FPO.**
- ✚ **Regeneration of Traditional Industries: Promotion of Handloom and Handicraft cluster.**
- ✚ **Thriving through Tribes: Eco-Tourism for sustainable livelihood.**



Livelihood Mapping & promotion of Micro Enterprise (Women & SHG)

As the Project Implementing Agency (PIA) for NABARD, Bethel Life Care Charitable Trust (BLCCT) conducted multiple livelihood generation initiatives in 2023-2024. Focused on women and Self-Help Group (SHG) members in Arunachal Pradesh, these programs aimed to equip participants with entrepreneurial and technical skills, empowering them to establish sustainable micro-enterprises. The following summary presents the key outcomes and activities of the Micro Enterprise Development Programme (MEDP) and the Livelihood Enterprise Development Programme (LEDP), alongside post-training handholding support initiatives such as digital and e-commerce skills training.

SL No.	Name of the project	Scheme of Project	Duration of the project	Targeted beneficiaries	Location	Status
1	Food Processing & Bakery	MEDP	15 Days	30	Anjaw	Completed
2	Food Processing & Bakery	MEDP	15 Days	30	Longding	Completed
3	Food Processing & Bakery	MEDP	15 Days	30	Miao	Completed
4	Candle Making	MEDP	15 Days	30	Longding	Completed

The MEDP focused on building entrepreneurial skills among women and SHG members through specialized training in food processing, bakery, and candle-making across three districts in Arunachal Pradesh. The training modules were designed to provide participants with skills that could lead to profitable micro-enterprises, fostering economic independence and contributing to local economies.





PLACEMENT AWARENESS PROGRAM UNDER LEDP



EXPOSURE VISIT AT TINSUKIA FOR THE BENEFICIARIES OF LEDP

1

Demonstration Unit: BLCCT established a unit equipped with four sewing machines for ongoing practice and skill development, supporting participants' transition into production.

The LEDP helped participants gain financial independence, with many now earning ₹3,000-₹10,000 monthly. One trainee established her own business, Usha Enterprise, using her skills to create local economic opportunities.

Hand holding support on Empowering Rural Entrepreneurs through Digital Transformation: A Capacity-Building Initiative by BLCCT

Bethel Life Care Charitable Trust (BLCCT), in partnership with NABARD and the Arunachal State Rural Livelihoods Mission (ArSRLM) in Namsai, successfully conducted a two-day capacity-building training on e-commerce, the Open Network for Digital Commerce (ONDC), and social media marketing for Self Help Groups (SHGs), Joint Liability Groups (JLGs), and micro-entrepreneurs on April 7th and 8th, 2024. The program was designed to empower rural entrepreneurs to expand their reach and increase income by integrating both offline and online marketing strategies. This training marked a critical step in helping these entrepreneurs transition from traditional, local sales models to digital commerce, allowing them to access a broader market and compete with larger retailers. E-commerce has become a key driver in today's economy, enabling even small-scale businesses to connect with customers beyond geographical boundaries. By utilizing platforms like ONDC, micro-entrepreneurs now have a more level playing field where they can promote and sell their goods effectively, regardless of location.

Key Highlights of the Training:

1. **E-Commerce and Digital Literacy:** Participants were introduced to the basics of e-commerce, including the setup and management of online storefronts. Practical sessions demonstrated how to create product listings, handle online orders, and respond to customer inquiries.
2. **The Power of ONDC:** As an open digital network, ONDC provides a unique opportunity for small businesses to reach new customers without the high commissions charged by mainstream platforms. Trainees learned how to onboard to ONDC, making their products available to a larger audience at a competitive cost.
3. **Social Media for Business Growth:** With billions of users across platforms, social media has become a powerful tool for visibility and brand-building. The training covered essential aspects of social media marketing, including content creation, audience engagement, and strategies to increase visibility on platforms such as Facebook, Instagram, and WhatsApp Business.
4. **Understanding Customer Needs and Online Trends:** In the age of digital commerce, it's crucial for entrepreneurs to stay aware of market trends and customer preferences. Sessions were held to introduce participants to tools for researching market demand and analyzing competitor strategies.
5. **Offline and Online Marketing Synergy:** By combining online marketing with traditional offline methods, participants can diversify their sales channels. While offline sales continue to form a foundation for many micro-entrepreneurs, online platforms allow them to sustain business during off-seasons and reach buyers who prefer digital purchases.

This initiative reflects BLCCT's commitment to providing ongoing support and mentorship to rural entrepreneurs, even after formal training programs conclude. With handholding support in both offline and online marketing, BLCCT is helping beneficiaries build sustainable businesses and adapt to the demands of the digital economy.



Skill Development Program: Youth (Course outline & Impact)

The Skill Development Program (SDP), an initiative by the National Bank for Agriculture and Rural Development (NABARD), aims to enhance the employability and entrepreneurial skills of rural youth, empowering them to become self-reliant. The program focuses on skill development in various sectors, including agriculture, rural industries, handicrafts, textile production, hospitality, and rural tourism, to bridge employment gaps in rural areas. It specifically targets marginalized communities, such



as women, SC/STs, and other underprivileged groups, providing them with the skills necessary to improve their livelihoods. In alignment with NABARD's vision and objectives, BLCCT focuses on empowering rural youth as part of its thematic area, offering them opportunities to develop essential skills that enhance employability and support sustainable livelihood generation.

List of SPD Training are as follow:

SL No.	Name of Project	Scheme	Duration	Areas/Location	No. of beneficiaries	Status
1	Sewing Machine Operator	Skill Development Program (SDP)	45 Days	TR Camp, Miao	30	Completed
2	Sewing Machine Operator	Skill Development Program (SDP)	45 Days	Longding	30	Completed
3	Sewing Machine Operator	Skill Development Program (SDP)	45 Days	Chowkham	30	Ongoing

Through the SMO programs, participants received in-depth training that combined sewing and tailoring skills with entrepreneurship, providing them with the tools to establish income-generating ventures.

Impact and outcomes of the Training



Pic 1 – Longding



Pic 2 – TR Camp

60 Beneficiaries Trained

45% Wage Employed

30% Started their business startup



SKILL DEVELOPMENT PROGRAM ON BEAUTY THERAPIST AT TINSUKIA, ASSAM



SKILL DEVELOPMENT PROGRAM ON UNARMED SECURITY GUARD AT KHONSA, TIRAP, ARUNACHAL PRADESH



SKILL DEVELOPMENT PROGRAM ON UNARMED SECURITY GUARD AT NAMSAI, ARUNACHAL PRADESH

Nurturing Growth: Empowering Women Farmers and Mushroom FPO

In FY 2022-23, Bethel Life Care Charitable Trust (BLCCT) spearheaded the Farm Sector Promotion Fund (FSPF) initiative for promoting mushroom farming, with funding from NABARD. This project has brought practical skills and new livelihood opportunities to 25 farmers in Jairampur.

❖ Project Launch and Farmer Support

The Farm Sector Promotion Fund (FSPF) project, launched on March 11, 2023, began with distributing mushroom kits to 25 farmers in Jairampur. BLCCT provided practical training and resources for each participant, with continuous guidance from resource persons and Krishi Vigyan Kendra (KVK).

❖ Mushroom Production Unit Installation

Under the FSPF project, 10 mushroom production units were set up across multiple locations, designed as demonstration sites to help farmers learn and adopt mushroom farming techniques firsthand.

❖ Hands-On Training and Monitoring

Farmers received in-depth, hands-on training in oyster mushroom cultivation, with close monitoring and ongoing assistance, ensuring each unit's successful setup and operation.



❖ Packaging, Branding, and Marketing Support

BLCCT extended marketing support, assisting farmers in selling their produce under the brand “Wuken,” which has brought recognition and value to their products.

❖ Impressive Output and Results

Through their newly established mushroom units, farmers produced approximately 50 to 60 kg of oyster mushrooms each, demonstrating the project's success and potential for replication.

❖ Exposure Visit to Enhance Skills

Building on the project’s achievements, NABARD approved a Capacity Building for Adoption of Technology (CAT) exposure visit to Basanti Mushroom Farm in Kolkata. This visit enabled the farmers to gain expertise in cultivating other mushroom varieties, such as Milky and Button mushrooms.

❖ Present Status and Continuous Support

The Farm Sector Promotional Fund (FSPF) project dedicated to Oyster Mushroom production reached its successful conclusion with the inauguration of "WUKEN" - a cutting-edge demonstration unit located in the picturesque Khamdu village of Jairampur, Changlang on 12.06.2023.

The "WUKEN" unit showcases facilities, including two mushroom incubation rooms with air conditioning, one non-AC mushroom incubation room, two storage rooms for straw, a spawn inoculation room, a spawn incubation room, a straw cutting machine, and packaging machine units. This pioneering demonstration unit was made possible through NABARD's generous support for mushroom seeds, equipment and materials, ground-level survey, trainer & consultant charges etc.

Today, farmers continue to receive support from BLCCT’s demonstration unit, helping them sustain and expand their mushroom farming efforts, which contribute to their livelihoods and the regional economy.



Regeneration of Traditional Industries: Promotion of Handloom and Handicraft Cluster

Introduction of METRU proposed off farm producer’s organization Changlang:



In 2021-2022, BLCCT conducted capacity-building training for artisans in Changlang, fostering skills of the artisans, later The Artisans Promote a brand Metru. Named in honor of local heritage, Metru became a community-driven brand with its own outlet in Changlang, providing artisans with a dedicated space to showcase and sell their handloom products.

Building on this success, BLCCT submitted a proposal to NABARD in the 2022–2023 financial year to establish an Off-Farm Producers Organization (OFPO). This initiative aims to further empower Changlang’s artisans, creating a formal structure to enhance production, distribution, and market access—

paving the way for sustainable growth under the Metru brand. Strategic Approach for Artisan Empowerment: The Metru initiative employs a cluster-based model, which has been instrumental in structuring the Skill Development Programme (SDP) with a focus on delivering quality, outcome-driven training. This approach aims to empower rural artisans by enhancing their skills, enabling them to preserve and innovate within their craft while expanding their reach to broader markets.

BLCCT’s Vision for OFPO Formation: In alignment with Metru's mission, BLCCT has proposed the formation of an Off-Farm Producers Organization (OFPO) under NABARD's support, aiming to

establish a Major Cluster of 250 artisans. This initiative will further rural enterprise by encouraging:

- ❖ Local Employment Generation: Promoting jobs within the community, reducing the need for migration, and enabling sustainable incomes.
- ❖ Design and Innovation: Introducing modern design techniques to enhance traditional handloom products.
- ❖ Infrastructure and Logistics Development: Building storage, processing, and aggregation facilities to support larger-scale production and streamline logistics.
- ❖ Mechanization and Capacity Building: Providing artisans with access to advanced tools, skills, and resources.

Pre-Visit & Current Status: To assess the groundwork for the OFPO, a pre-visit was conducted on May 15, 2023, by an esteemed NABARD team, including Deputy General Manager Shri Mrinal Ranjan, Assistant Manager Ankit Chowdhury, and DDM NABARD Shri Kamal Roy. The team engaged with artisans and weavers in Kengkhu Village, gaining firsthand insight into their workspaces and discussing the potential impact of the OFPO initiative.

Their visit also included a tour of Changlang’s handloom facilities, where they observed the artisans’ skill and the dedication that drives their craft.



Nongtham Handloom Cluster Producer Company Limited

NHCPC: (History & Revive)

The journey of Nongtham Handloom Cluster Producer Company Ltd (NHCPC) is a story of growth, resilience, and celebration of traditional craftsmanship supported by Bethel Life Care Charitable Trust (BLCCT) and funded by NABARD, this initiative has transformed the local handloom sector in Changlang District, providing a vibrant platform for artisans to thrive.

Building Skills, Building Futures: BLCCT's involvement began with capacity-building training in 2018–2019, where 60 artisans received capacity building training in handloom weaving under PMKVY. In 2021–2022, BLCCT furthered this effort by training 30 beneficiaries in hand embroidery, helping expand the skill set of local artisans which was funded by NABARD. These training programs laid the groundwork for a sustainable artisan community with a vision for long-term growth.

Establishing NHCPC: On September 29, 2021, BLCCT facilitated the Off Farm Producer Company

Organization (OFPO) a formal registration of Nongtham Handloom Cluster Producer Company Ltd, a collective of 100 artisans, under the Companies Act, 2013. The registered organization became a beacon for local artisans, offering them a platform to collaborate, innovate, and promote their creations.

Meeting Demand and Expanding Reach with Rural Marts: Recognizing the growing demand and production volume, NABARD approved the establishment of two Rural Marts: the first in Miao to Karumwan on July 12, 2022, and the second in Nongtham on November 7, 2023. These Rural Marts, promoted by BLCCT, now serve as dedicated outlets for the artisans' creations, connecting them directly with customers and helping increase their sales reach.



GI Recognition:

The GI recognition, awarded on October 3, 2023, signifies the uniqueness and quality and identification of Tangsa handloom products, marking a significant achievement for the region and cementing the identity of the Tangsa community in the larger handloom industry, where products from 12 SHGs and over 100 artisans are proudly displayed.

Current Status and Financial Growth: Today, the artisans of NHCPC are active year-round, with a seasonal turnover reaching up to ₹1 lakh, and off-season earnings around ₹60,000. This steady income reflects the success of NHCPC's model in providing economic stability to local artisans, while their products gain a loyal customer base and increasing demand.

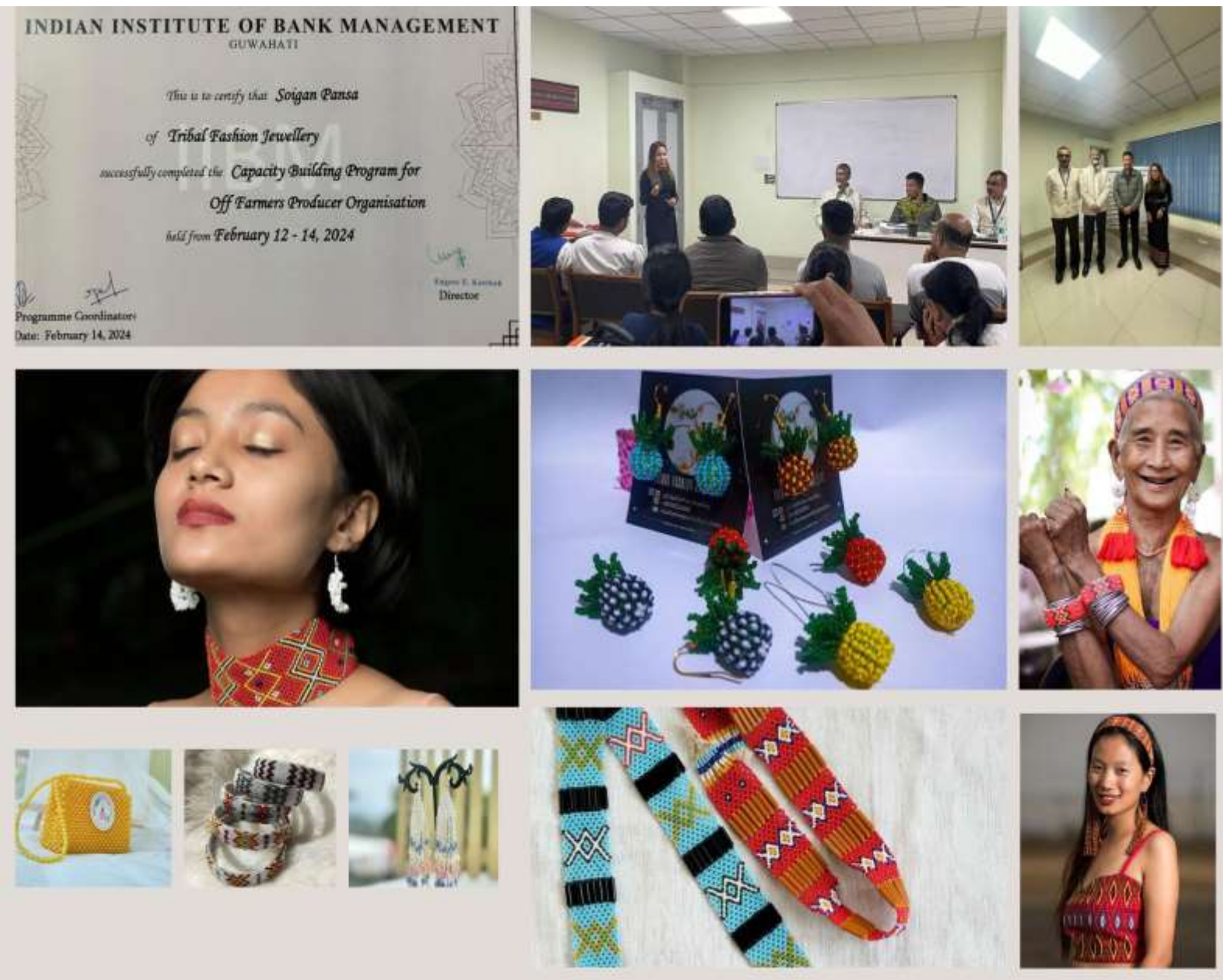
BLCCT and NABARD: Partners in Progress the progress of NHCPC stands as a testament to BLCCT's role as an OFPO facilitator and implementing agency. Through the Rural Marts, training initiatives, and constant support from NABARD, BLCCT has empowered artisans with a solid foundation, enabling them to celebrate their craft, secure a steady income, and gain well-deserved recognition for their exceptional handloom products.



Tribal Fashion Jewellery:

Bethel Life Care Charitable Trust (BLCCT) is dedicated to uplifting communities by providing skill development and entrepreneurial support, especially to youth. Recognizing skill development as a core thematic area, BLCCT actively aligns with its mission to empower young individuals, promoting growth within their chosen domains.

In February 2024, BLCCT extended its support to a promising entrepreneur in Tribal Fashion Jewellery (TFJ) by facilitating her participation in a capacity-building program organized by the Banking Institution of Rural Development (BIRD). Held from February 12 to February 14, this training equipped her with vital skills in financial planning, market understanding, and business management. Through such initiatives, BLCCT champions young artisans, providing them with the tools to transform traditional crafts into thriving enterprises.



THRIVING THROUGH TRIBES: ECO TOURISM FOR SUSTAINABLE LIVELIHOOD

"My District, My Project" initiative, the Tribal Eco Tourism project in Namsai District is making significant strides in uplifting local livelihoods through community-led tourism. Inaugurated by the Chief General Manager of NABARD, Head Office Mumbai, this initiative has aimed at transforming Namsai's rural homestays and tour operators into sustainable income sources for the community. Under the stewardship of Bethel Life Care Charitable Trust (BLCCT), the project has successfully evolved into a formal entity—Voysiri Private Limited—registered under the Companies Act, 2013. Voysiri now stands as a unifying body, actively supporting homestay operators and tour services while enhancing the area's appeal as an eco-tourism destination.

Present Achievements of Voysiri Private Limited:

1. **Digital Presence:** Voysiri has launched an official website showcasing itineraries, circuits, and local attractions to streamline visitor experiences and promote tourism in Namsai.
2. **Promotion of Rural Tourism:** To promote rural tourism and attract a wider audience, Voysiri has developed high-quality videos highlighting Namsai's natural beauty, cultural richness, and authentic rural experiences.
3. **Local Tours & Experiences:** Guided "Wallong rides," the Poi-Pee-Mau campsite experience, and participation in local festivals provide authentic cultural interactions for visitors.
4. **New Facilities:** Voysiri has established its office in Namsai and inaugurated additional homestay facilities to accommodate tourists comfortably.



Future Vision of Voysiri Private Limited: Looking ahead, Voysiri plans to adopt local villages to promote rural home stays, enriching the cultural exchange for visitors and fostering economic growth for local communities. This strategic move aims to broaden the tourism circuit, ensuring a more immersive and sustainable model that directly benefits the local population.

Through these efforts, the Tribal Eco Tourism project in Namsai is opening doors to vibrant opportunities, positioning rural tourism as a powerful tool for community development and livelihood generation in the region.

AWARENESS PROGRAM



AWARENESS CAMP ON FINANCIAL LITERACY PROJECT

The Financial Literacy Awareness Camp conducted by Bethel Life Care Charitable Trust (BLCCT) aimed to equip members of the Self-Help Group with essential financial knowledge and skills to foster economic stability and informed decision-making.

Key outcomes of the program include:

- ✚ **Enhanced Financial AwarenessProtection Against Financial Fraud**
- ✚ **Strengthened Relationships with Financial Institutions**
- ✚ **Introduction to Online Banking**
- ✚ **Financial Documentation and Compliance**
- ✚ **Pathways to Financial Independence**





FREE HEALTH CAMPS CONDUCTED BY MNTS (A unit of BLCCT)

This Summer 2023
#KnowYourNature

- Yoga & Meditation
- Nature Walk & Cycling
- Forest Food Hunt
- Nature Games & Learnings
- Camping & Survival Skills
- Compassionate Farming Skills
- Birds & Butterfly Identification
- Nature Photography & Exhibition
- River Rafting & Adventure Sports
- Nature Films & Documentary
- Music & Jamming Sessions

Nature | Fun | Adventure

NATURE EDUCATION CAMP | 2023

3rd-5th June

Woods Window Resort,
Miao, Arunachal Pradesh

Organised By: In collaboration with:

COME, CELEBRATE NATURE WITH US ON
WORLD BICYCLE DAY | 3rd JUNE & WORLD ENVIRONMENT DAY | 5th JUNE

To Register Call: +91 8486 4567 60 | 99572 25956

Participation limit- 30 nos | First come First Basis

BASELINE SURVEY FOR BIO-DEVERSITY RISK AND AWARENESS ON PERMACULTURE



RISHAV THARD
Chartered Accountants

RISHAV THARD & ASSOCIATES
Geeta Bhawan
Gandhi Park Road
Tinsukia – 786 125
Phone – 8812804483

AUDITOR'S REPORT

To The Members of

BETHEL LIFE CARE CHARITABLE TRUST

REGISTERED OFFICE: ABOVE CHENA PHARMACY, JAIRAMPUR, CHANGLANG, CHANGLANG, 792121, ARUNACHAL PRADESH, INDIA

We have audited the accompanying Financial Statements of **BETHEL LIFE CARE CHARITABLE TRUST**, registered under "REGISTERED UNDER TRUST ADHINIYAM" Registered Office: **ABOVE CHENA PHARMACY, JAIRAMPUR, CHANGLANG, CHANGLANG, 792121, ARUNACHAL PRADESH, INDIA** which comprise the Balance Sheet as on March 31, 2024 and The Statement of Income and Expenditure for the year ended March 31, 2024 and a summary of significant accounting policies and other explanatory information.

Management's Responsibility for the Financial Statements

The Management of Trust is responsible for the preparation of these financial statements that give a true and fair view of the financial position and financial performance of the Trust in accounting principles generally accepted in India. This responsibility also includes maintenance of adequate accounting records in accordance with statutory provisions for safeguarding of the assets of the Trust and for preventing and detecting frauds and other irregularities; selection and application of appropriate accounting policies; making judgments and estimates that are responsible and prudent ; and design, implementation and maintenance of adequate internal financial controls, that were operating effectively for ensuring the accuracy and completeness of the accounting records, relevant to the preparation and presentation of the financial statements that give a true and fair view and are free from material misstatement, whether due to fraud or error.

Auditor's Responsibility

Our responsibility is to express an opinion on these financial statements based on our audit. We have conducted our audit in accordance with the Standards on Auditing issued by The Institute of Chartered Accountant of India. Those standards require that we comply with ethical requirements and plan and perform the audit to obtain reasonable assurance about whether the financial statements are free from material misstatement.



An Audit involves performing procedures to obtain audit evidence about the amounts and disclosure in financial statements. The procedures selected depend on the auditor's judgment, including the assessment of the risks of material misstatement of the financial statements, whether due to fraud or error. In making those risks assessments, the auditor consider internal control relevant to the Trust's preparation and fair presentation of the financial statements in order to design audit procedures that are appropriate in the circumstances. An audit also includes evaluating the appropriateness of accounting policies used and the reasonableness of the accounting estimates made by management, as well as evaluating the overall presentation of the financial statements.

We believe that the audit evidence we have obtained is sufficient and appropriate to provide a basis for our audit opinion.

Opinion

In our opinion and to the best of our information and according to the explanations given to us ,the financial statement give the information required by the Act in the manner so required and give a true and fair view in conformity with the accounting principles generally accepted in India:

- a) In the case of Balance Sheet of the state of affairs of the Trust as at 31st March, 2024 and
- b) In case of Income & Expenditure account of the Surplus being excess Income over Expenditure for the year ended on that date.

We further report that:

- a) We have obtained all the information and explanations which to the best of our knowledge and belief were necessary for the purpose of our audit;
- b) In our opinion proper books of accounts are required by law have been kept by the Trust so far as appears from our examination of those books;
- c) The Balance Sheet and Statement of Income and Expenditure dealt with by this report are in agreement with the books of account;
- d) No provision has been made in respect of any liability which is of contingent nature;
- e) Balances of Sundry Creditors & Other Credit Balances, Deposits, Loans & Advances, Sundry Debtors are subject to Confirmation and reconciliation, if any;



- f) Closing stock and Cash balance as at 31-3-2024 have not been physically verified by me however they have been certified by organization;
- g) Our report is based on the basis of books of accounts and records provided to us by the management;
- h) The financial statement of the concern is subject to GST Liability & Reconciliation (If Any).
- i) We hereby certify that the following activity undertaken by trust during the above mentioned period –

**SKILL DEVELOPMENT PROGRAMME UNDER
DEPARTMENT OF SKILL DEVELOPMENT & ENTREPRENEURSHIP, Govt. of Arunachal Pradesh**

S.NO.	SCHEME	Trade/Course	Training Centre
1	Pradhan Mantri Kaushal Vikas Yojna -3.0-CSSM (Scheme)	General Duty Assistant	Martha Nursing Training School, Jairampur
2		Self Employed Tailor	Bethel Skills Changlang, Miao
3		Solar Panel Installation Technician	Bethel Skills Changlang, Miao
4		Two Shaft Handloom Weaving	Bethel Skills Kharsang



PROJECT DONE UNDER NABARD

S.NO.	NAME OF PROJECT	PLACE
1	Skill Development Program on Sewing Machine Operator for SHGs & Unemployed women	Namsai, Arunachal Pradesh
2	Training Programme to SHGs/ JLGs/Producer Organizations (POs)/Microentrepreneurs for training, onboarding and marketing of products on online/digital marketplaces on E- commerce, social media platforms and ONDC	Namsai, Arunachal Pradesh
3	Farm Sector Promotion Fund for the promotion of Oyster Mushroom	Jairampur, Changlang, Arunachal Pradesh
4	Micro Enterprise Development Program on Food Processing & Bakery	Anjaw
5	Micro Enterprise Development Program on Candle Making	Longding
6	Micro Enterprise Development Program on Candle Making	Namsai, Arunachal Pradesh
7	Micro Enterprise Development Program on Food Processing & Bakery	Longding
8	Micro Enterprise Development Program on Food Processing & Bakery	Miao, Changlang, Arunachal Pradesh
9	Skill Development Program on Beauty Therapist	Tinsukia, Assam
10	Skill Development Program on Sewing Machine Operator for SHGs & Unemployed women	TR Camp, Miao, Changlang
11	Skill Development Program on Sewing Machine Operator for SHGs & Unemployed women	Alubari, Chowkham, Namsai
12	Skill Development Program on Sewing Machine Operator for SHGs & Unemployed women	Longding
13	Skill Development Program on Sewing Machine Operator for SHGs & Unemployed women	Namsai, Arunachal Pradesh
14	Livelihood Enterprise Development Program on Sewing Machine Operator for SHGs	Diyun, Changlang, Arunachal Pradesh
15	Skill Development Program on Unarmed Security Guard for unemployed youths	Namsai, Arunachal Pradesh
16	Skill Development Program on Unarmed Security Guard for unemployed youths	Khonsa, Tirap, Arunachal Pradesh
17	Cluster Development and promotion of OFPO in Handloom & Textile	Changlang, Arunachal Pradesh
18	Tribal Eco -Tourism - My District My Project	Namsai, Arunachal Pradesh



AWARENESS & OTHER PROGRAMME CONDUCTED:

S.NO.	NAME OF PROJECT	PLACE
1	AWARENESS CAMP ON GOOD AGRICULTURE PRACTICE	Kundlil Block, Sadiya, Tinsukia, Assam
	AWARENESS GENERATION AMONG YOUTH-LIFE SKILLS	Changlang (A.P.)
2	AWARENESS CAMP ON FINANCIAL LITERACY PROJECT	Jairampur & Miao,
3	JOB-FAIR & SELF EMPLOYMENT AWARENESS	Diyun, Changlang
4	WORKSHOP ON MENTAL HEALTH AND WELL BEING	Dibrugarh, Assam
5	FREE HEALTH CAMPS	Jairampur, Changlang
6	LIVELIHOOD MAPPING & CLUSTER DEVELOPMENT - PROGRAMME IN PROMOTION OF FPO/PFPO	Changlang, Namsai
7	AWARENESS CAMP ON USAGE OF SOLAR ENERGY	Miao, Changlang (A.P.)
8	BASELINE SURVEY FOR BIO-DEVERSITY RISKS AND AWARENESS ON PERMACULTURE	Jairampur, Changlang (A.P.)
9	COMMUNITY SENSITIZATION ON HUMAN TRAFFICKING	Jairampur, Changlang
10	YOGA AWARENESS CAMP	Jairampur, Changlang

Place : TINSUKIA

Date : 06.10.2024

For Rishav Thard & Associates

Chartered Accountants

Firm's Reg. No.: 331961E



Rishav Thard

(RISHAV THARD)

Proprietor

Membership No.: 314471

UDIN: 24314471BKEMXR1854

BETHEL LIFE CARE CHARITABLE TRUST

REG. OFFICE - ABOVE CHENA PHARMACY, JAIRAMPUR, CHANGLANG, CHANGLANG, ARUNACHAL PRADESH, INDIA-792121

Planning Commission (NITI AAYOG) Government of India Regn. No. AR/2017/0158564

Registered under Section 12AB & 80G of Income Tax Act, 1961

BALANCE SHEET

AS ON 31/03/2024

FUNDS & LIABILITIES	AMOUNT	ASSETS	AMOUNT
CORPUS FUND	9,50,000.00		
GENERAL FUND:		FIXED ASSETS:-	
AS PER LAST BALANCE SHEET	47,18,899.03	Computer	21,307.00
ADD: SURPLUS AS PER INCOME		LESS:- DEPRE. @40%	8,523.00
& EXPENDITURE ACCOUNT	20,40,264.98		12,784.00
	67,59,184.01	Furniture & Fittings	4,39,341.20
		Add - Addition	49,300.00
			4,88,641.20
OTHER LIABILITIES		LESS:- DEPRE. @10%	48,864.00
Audit Fee Payable	15,000.00		4,39,777.20
Employers' Contribution to PF Payable	11,505.00	Building	4,27,364.00
Employees' Contribution to PF Payable	10,560.00	LESS:- DEPRE. @10%	42,736.00
Voysini Private Limited	75,600.00		3,84,628.00
Other SDP Expenses Payable	7,21,900.00	Plant & Machinery	2,95,710.75
		Add - Addition	67,000.00
			3,62,710.75
		LESS:- DEPRE. @15%	50,957.00
			3,11,753.75
		Land	8,87,750.00
			8,87,750.00
		Building Wip	50,86,104.00
			50,86,104.00
		DEPOSITS	86,000.00
		LOANS & ADVANCES	9,81,021.00
		CLOSING BALANCE:	
		CASH IN HAND	57,535.00
		(As Certified by Secretary)	
		CASH AT BANK	
		SBI Bank AC No. 38435643265	2,61,573.26
		SBI Bank AC No. 40228023421	12,232.18
		PNB Bank AC No. 0310050023825	22,790.72
			2,96,596.16
TOTAL Rs. :-	85,43,949.01	TOTAL Rs. :-	85,43,949.01

For,
BETHEL LIFE CARE CHARITABLE TRUST

PLACE : TINSUKIA
DATED : 06.10.2024

For Rishav Thard & Associates
Chartered Accountants
Firm Reg. No. : 331961E

Rishav Thard

(RISHAV THARD)
Proprietor
Membership No. : 314471



BETHEL LIFE CARE CHARITABLE TRUST

REG. OFFICE - ABOVE CHENA PHARMACY, JAIRAMPUR, CHANGLANG, CHANGLANG, ARUNACHAL PRADESH, INDIA-792121

Planning Commission (NITI AYOJ) Government of India Regn. No. AR/2017/0158584

Registered under Section 12AB & 80G of Income Tax Act, 1961

INCOME AND EXPENDITURE ACCOUNT

FOR THE YEAR ENDED 31/03/2024

EXPENDITURE	AMOUNT	INCOME	AMOUNT
To Social Welfare/Skill Development Programme Expenses		By Grant Received	
E Commerce Training Programme	1,02,802.00	Dept. of Skill Development, Itanagar	26,64,990.00
Farm Sector Promotion Fund Project	1,26,655.00	NABARD	48,67,077.00
Food Processing & Bakery - Anjaw	1,00,860.00		75,32,067.00
MEDP Candle Making Program, Longding	72,650.00	By Martha Nursing Training School	
MEDP Candle Making Program, Namsai	83,915.00	Admission Fees Receipt	32,13,390.00
MEDP Food Processing & Bakery, Longding	61,305.00	Hostel/Mess Fees Receipt	31,19,460.00
MEDP Food Processing & Bakery, Mao	98,215.00	Other receipts from students	57,275.00
SDP Beauty Therapist, Tinsukia	3,85,296.00		63,90,125.00
Sewing Machine Operator SDP - TR Camp	2,23,044.00	By Bank Interest	9,043.01
Sewing Machine Operator - Chowkham	21,800.00		
Sewing Machine Operator SDP - Longding	2,16,389.00	By Interest on IT Refund	494.00
Sewing Machine Operator SDP - Namsai	2,98,210.00		
Sewing Machine - LEDP	1,16,413.00		
Unarmed Security Guard SDP Namsai	3,09,600.00		
Unarmed Security Guard SDP Khonsa	4,26,000.00		
Soft Skill Training Programme	41,000.00		
Other SDP Expenses	6,07,877.88		
	32,72,031.88		
To Martha Nursing Training School			
Academic Training	1,62,000.00		
Affiliation Fees	44,000.00		
APNC Renewal Fees	1,04,800.00		
Books and Periodicals	90,325.00		
Car Running Expenses	1,78,220.00		
Examination Fees	34,659.00		
Electricity charges	84,424.00		
Hostel Rent	4,43,500.00		
School Building Rent	94,500.00		
Other Rent	13,500.00		
Mess Expenses	18,40,131.00		
Miscellaneous Expenses	2,43,694.00		
INC Renewal Fees	1,30,035.40		
Repair & Maintenance Expenses	1,42,508.00		
Teacher Refreshment Exp	1,48,003.50		
Teachers Salary	21,78,417.00		
Uniform Expenses	8,750.00		
	59,37,466.90		
To Administration Expenses			
Accounting Charges	20,000.00		
Honorarium	1,12,400.00		
Consulting Charges	13,600.00		
Repair & Maintenance Expenses	27,732.25		
Postage & Telegram	4,500.00		
Printing & Stationary	1,51,452.00		
Professional charges	23,000.00		
Salary Expenses	7,98,800.00		
Tally subscription expenses	8,204.00		
Travelling Expenses	3,14,034.00		
Rental expenses	1,01,000.00		
Website Upgradation	1,00,733.00		
Other expenses	(1.00)		
	16,76,454.25		
To Other Programmes			
WORKSHOP ON MENTAL HEALTH & WELL BEING	50,000.00		
AWARENESS CAMP ON GOOD AGRICULTURE PRACTICE	1,16,040.00		
AWARENESS GENERATION AMONG YOUTH-LIFE SKILLS	1,06,000.00		
AWARENESS CAMP ON FINANCIAL LITERACY PROJECT	48,700.00		
JOB-FAIR & SELF EMPLOYMENT AWARENESS	72,000.00		
FREE HEALTH CAMPS	39,200.00		
LIVELIHOOD MAPPING & CLUSTER DEVELOPMENT	70,000.00		
- PROGRAMME IN PROMOTION OF FPO/PFPO			
AWARENESS CAMP ON USAGE OF SOLAR ENERGY	49,200.00		
BASELINE SURVEY FOR BIO-DIVERSITY RISKS AND			
AWARENESS ON PERMACULTURE	17,800.00		
COMMUNITY SENSITIZATION ON HUMAN TRAFFICKING	40,000.00		
YOGA AWARENESS CAMP	1,35,000.00		
	7,43,940.00		



To <u>Provident Fund</u>	88,260.00		
To <u>Income Tax</u>	7,211.00		
To <u>Audit Expenses</u>	15,000.00		
To <u>Depreciation</u> On Fixed Assets	1,51,000.00		
To <u>Excess of Income over Expenditure</u>	20,40,284.98		
TOTAL Rs. :-	1,39,31,729.01	TOTAL Rs. :-	1,39,31,729.01

FOR,
BETHEL LIFE CARE CHARITABLE TRUST

PLACE : TINSUKIA
DATED : 06.10.2024

For Rishav Thard & Associates
Chartered Accountants
Firm Reg. No. : 331961E

Rishav Thard

(RISHAV THARD)
Proprietor
Membership No.: 314471



BETHEL LIFE CARE CHARITABLE TRUST

REG. OFFICE - ABOVE CHENA PHARMACY, JAIRAMPUR, CHANGLANG, CHANGLANG, ARUNACHAL PRADESH, INDIA-792121

Planning Commission (NITI AYO) Government of India Regn. No. AR/2017/0158564

Registered under Section 12AB & 80G of Income Tax Act, 1961

RECEIPT & PAYMENT ACCOUNT FOR THE YEAR ENDED 31/03/2024

RECEIPTS	AMOUNT	PAYMENTS	AMOUNT
To OPENING BALANCE :-		By Social Welfare/Skill Development Programme Expenses	
CASH IN HAND (As Certified by Secretary)	63,972.00	E Commerce Training Programme	1,02,802.00
CASH AT BANK		Farm Sector Promotion Fund Project	1,26,656.00
SBI Bank AC No. 38435643265	1,10,363.29	Food Processing & Bakery - Anjaw	1,00,860.00
SBI Bank AC No. 40228023421	1,68,598.17	MEDP Candle Making Program, Longding	72,850.00
PNB Bank AC No. 0310050023825	22,790.72	MEDP Candle Making Program, Namsai	63,915.00
	3,65,724.18	MEDP Food Processing & Bakery, Longding	81,305.00
		MEDP Food Processing & Bakery, Mao	98,215.00
To Grant Received		SDP Beauty Therapist, Tinsukia	3,85,296.00
Dept. of Skill Development, Itanagar	26,64,990.00	Sewing Machine Operator SDP - TR Camp	2,23,044.00
NABARD	48,67,077.00	Sewing Machine Operator - Chowkham	21,800.00
	75,32,067.00	Sewing Machine Operator SDP - Longding	2,16,389.00
		Sewing Machine Operator SDP - Namsai	2,98,210.00
To Martha Nursing Training School		Sewing Machine - LEDP	1,16,413.00
Admission Fees Receipt	32,13,390.00	Unarmed Security Guard SDP Namsai	3,09,600.00
Hostel/Mess Fees Receipt	31,19,460.00	Unarmed Security Guard SDP Khonsa	4,26,000.00
Other receipts from students	57,275.00	Soft Skill Training Programme	41,000.00
	63,90,125.00	Other SDP Expenses	6,07,877.88
			32,72,031.88
To Received from Yoyisiri (Net)	25,800.00	By Martha Nursing Training School	
To Bank Interest	9,153.01	Academic Training	1,62,000.00
To Other SDP Expenses Payable	7,21,900.00	Affiliation Fees	44,000.00
To Loan from parties	25,000.00	APNC Renewal Fees	1,04,800.00
		Books and Periodicals	90,325.00
		Car Running Expenses	1,78,220.00
		Examination Fees	34,659.00
		Electricity charges	84,424.00
		Hostel Rent	4,43,500.00
		School Building Rent	94,500.00
		Other Rent	13,500.00
		Mess Expenses	18,40,131.00
		Miscellaneous Expenses	2,43,694.00
		INC Renewal Fees	1,30,035.40
		Repair & Maintenance Expenses	1,42,508.00
		Teacher Refreshment Exp	1,46,003.50
		Teachers Salary	21,75,417.00
		Uniform Expenses	8,750.00
			59,37,466.90
		By Administration Expenses	
		Accounting Charges	20,000.00
		Honorarium	1,12,400.00
		Consulting Charges	13,600.00
		Repair & Maintenance Expenses	27,732.25
		Postage & Telegram	4,500.00
		Printing & Stationary	1,51,452.00
		Professional charges	23,000.00
		Salary Expenses	7,98,800.00
		Tally subscription expenses	9,204.00
		Travelling Expenses	3,14,034.00
		Rental expenses	1,01,000.00
		Website Upgradation	1,00,733.00
		Other expenses	(1.00)
			16,78,454.25
		To Other Programmes	
		WORKSHOP ON MENTAL HEALTH & WELL BEING	50,000.00
		AWARENESS CAMP ON GOOD AGRICULTURE PRACTICE	1,18,040.00
		AWARENESS GENERATION AMONG YOUTH-LIFE SKILLS	1,06,000.00
		AWARENESS CAMP ON FINANCIAL LITERACY PROJECT	48,700.00
		JOB-FAIR & SELF EMPLOYMENT AWARENESS	72,000.00
		FREE HEALTH CAMPS	39,200.00
		LIVELIHOOD MAPPING & CLUSTER DEVELOPMENT	70,000.00
		- PROGRAMME IN PROMOTION OF FPO/PPFO	
		AWARENESS CAMP ON USAGE OF SOLAR ENERGY	49,200.00
		BASLINE SURVEY FOR BIO-DIVERSITY RISKS AND	
		AWARENESS ON PERMACULTURE	17,800.00
		COMMUNITY SENSITIZATION ON HUMAN TRAFFICKING	40,000.00
		YOGA AWARENESS CAMP	1,35,000.00
			7,43,940.00
		By Provident Fund	66,195.00
		By Loan Repaid to various parties	25,000.00
		By Accounting charges Payable	12,000.00
		By Audit Fee Payable	10,000.00
		By Other SDP Expenses Payable	8,16,410.00
		By Rent Payable	10,000.00
		By Plant Machinery Purchased	67,000.00
		By Furniture Purchased	49,300.00



		By <u>Building Under Construction</u>	19,69,491.00
		By <u>Loans & Advances</u>	60,349.00
		By <u>CLOSING BALANCE:</u>	
		CASH IN HAND	67,535.00
		(As Certified by Secretary)	
		CASH AT BANK	
		SBI Bank AC No. 30405643265	2,61,573.26
		SBI Bank AC No. 40226023421	12,232.18
		PNB Bank AC No. 0310050023825	22,790.72
			3,54,131.16
	TOTAL Rs. :-	1,50,69,769.19	TOTAL Rs. :- 1,50,69,769.19

FOR,
BETHEL LIFE CARE CHARITABLE TRUST

PLACE : TINSUKIA
DATED : 06.10.2024

For Rishav Thard & Associates
Chartered Accountants
Firm Reg. No. : 331961E

Rishav Thard

(RISHAV THARD)
Proprietor
Membership No. : 314471





Changlang Skill Center



WSDC Skill Center



Bethel Life Care Charitable Trust

Above Chena Pharmacy,
PO/PS – Jairampur, Pin-
792121,
Dist- Changlang, State: -
Arunachal Pradesh, India.
Email: - blctskill@gmail.com



Nongtham Skill Center



Martha Nursing Training School

